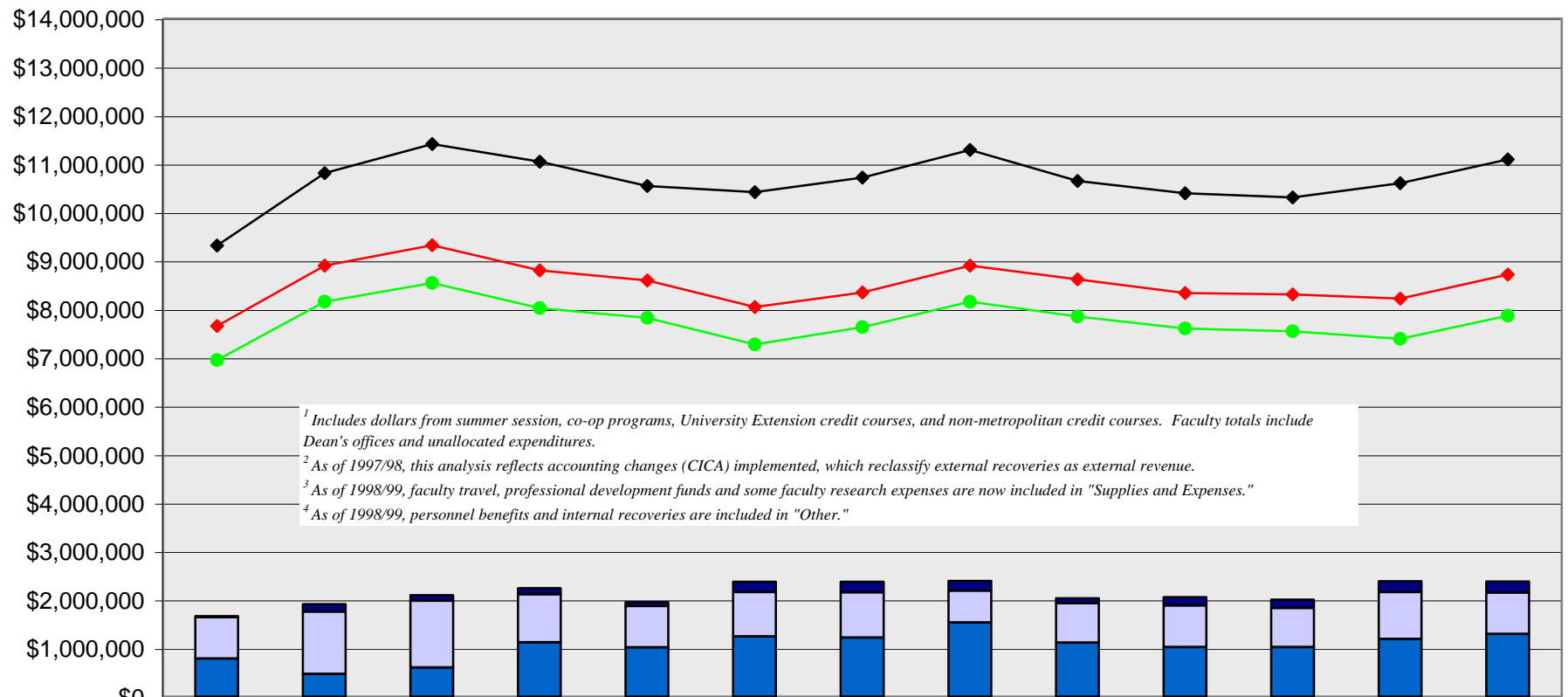


# Academic Fiscal-Year Expenditures by Category<sup>1,2,3,4</sup>

## EDUCATION



<sup>1</sup> Includes dollars from summer session, co-op programs, University Extension credit courses, and non-metropolitan credit courses. Faculty totals include Dean's offices and unallocated expenditures.  
<sup>2</sup> As of 1997/98, this analysis reflects accounting changes (CICA) implemented, which reclassify external recoveries as external revenue.  
<sup>3</sup> As of 1998/99, faculty travel, professional development funds and some faculty research expenses are now included in "Supplies and Expenses."  
<sup>4</sup> As of 1998/99, personnel benefits and internal recoveries are included in "Other."

	1990/91	1991/92	1992/93	1993/94	1994/95	1995/96	1996/97	1997/98	1998/99	1999/00	2000/01	2001/02	2002/03
Equip./Furnishings/Renos	\$25,524	\$157,166	\$115,145	\$127,524	\$78,133	\$212,465	\$215,345	\$201,973	\$102,840	\$175,645	\$173,949	\$226,134	\$227,254
Supplies and Expenses	\$850,966	\$1,288,343	\$1,378,159	\$994,450	\$851,321	\$918,844	\$938,253	\$658,432	\$815,664	\$859,644	\$810,680	\$966,290	\$853,934
Other	\$786,907	\$464,877	\$600,811	\$1,117,215	\$1,018,519	\$1,241,106	\$1,215,606	\$1,529,477	\$1,113,984	\$1,021,622	\$1,020,381	\$1,190,816	\$1,293,624
Faculty Admin/Prof Salaries	\$6,600,058	\$7,764,006	\$8,149,426	\$7,603,644	\$7,390,761	\$6,826,603	\$7,103,003	\$7,666,391	\$7,220,128	\$6,969,097	\$6,876,663	\$6,728,651	\$7,439,254
Specialist/Instr. Salaries	\$349,672	\$387,735	\$389,869	\$414,933	\$426,740	\$443,505	\$526,101	\$486,956	\$626,937	\$630,755	\$667,923	\$657,919	\$424,547
Total Teaching Salaries	\$6,949,730	\$8,151,741	\$8,539,295	\$8,018,577	\$7,817,501	\$7,270,108	\$7,629,104	\$8,153,347	\$7,847,065	\$7,599,852	\$7,544,586	\$7,386,570	\$7,863,801
Ex./Office/Tech. Salaries	\$703,816	\$748,710	\$778,129	\$784,750	\$776,872	\$773,168	\$716,964	\$745,490	\$770,484	\$735,807	\$758,864	\$830,279	\$851,306
Total Personnel Salaries	\$7,653,546	\$8,900,451	\$9,317,424	\$8,803,327	\$8,594,373	\$8,043,276	\$8,346,068	\$8,898,837	\$8,617,549	\$8,335,659	\$8,303,450	\$8,216,849	\$8,715,107
Total Expenditures	\$9,316,943	\$10,810,837	\$11,411,539	\$11,042,516	\$10,542,346	\$10,415,691	\$10,715,272	\$11,288,719	\$10,650,037	\$10,392,570	\$10,308,460	\$10,600,089	\$11,089,919